



# Kreymer East

**Final Opportunities! 2.5 Car Garage Included!**

1007 SHELDON DRIVE • WYLIE, TX 75098

## AVAILABLE HOMES



Move-In Ready

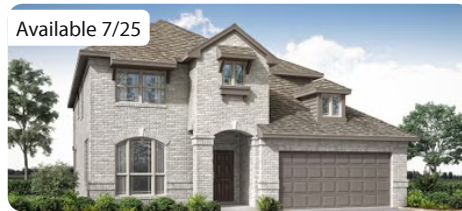
**318 Mandarin Circle**

WYLIE, TX 75098

DEWBERRY III FLOOR PLAN

**3,269** **5** **3.5** **2.5**  
SQUARE FEET BEDS BATHS GARAGE

WAS ~~\$736,372~~ NOW **\$642,400**



Available 7/25

**1207 Peacock Lane**

WYLIE, TX 75098

DEWBERRY II FLOOR PLAN

**3,034** **4** **2.5** **2.5**  
SQUARE FEET BEDS BATHS GARAGE

WAS ~~\$663,823~~ NOW **\$581,200**



Available 7/25

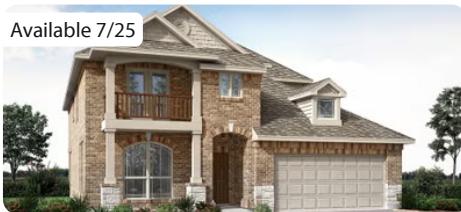
**1206 Hawk Street**

WYLIE, TX 75098

VIOLET IV FLOOR PLAN

**2,849** **5** **4** **2.5**  
SQUARE FEET BEDS BATHS GARAGE

WAS ~~\$696,408~~ NOW **\$629,100**



Available 7/25

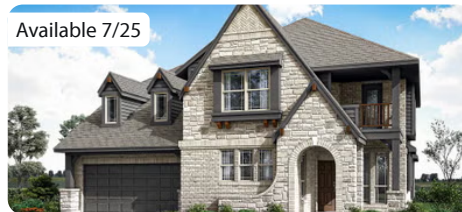
**1134 Oriole Drive**

WYLIE, TX 75098

DEWBERRY III FLOOR PLAN

**3,261** **5** **3.5** **2.5**  
SQUARE FEET BEDS BATHS GARAGE

WAS ~~\$704,105~~ NOW **\$639,400**



Available 7/25

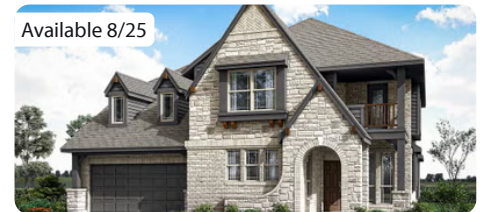
**406 Maltese Circle**

WYLIE, TX 75098

MAGNOLIA II FLOOR PLAN

**3,435** **4** **3.5** **2.5**  
SQUARE FEET BEDS BATHS GARAGE

WAS ~~\$778,364~~ NOW **\$659,100**



Available 8/25

**1111 Peacock Lane**

WYLIE, TX 75098

MAGNOLIA II FLOOR PLAN

**3,435** **4** **3.5** **2.5**  
SQUARE FEET BEDS BATHS GARAGE

WAS ~~\$753,499~~ NOW **\$649,300**

