



# Primrose FE V

CLASSIC SERIES

**KREYMER EAST**

1007 SHELDON DRIVE, WYLIE, TX 75098

HOMES FROM  
**\$745,990**

**3,733**  
SQUARE FEET

**4**  
BEDROOMS

**3.5**  
BATHROOMS

**3**  
CAR GARAGE



**ELEVATION A**



**ELEVATION B**



**ELEVATION C**





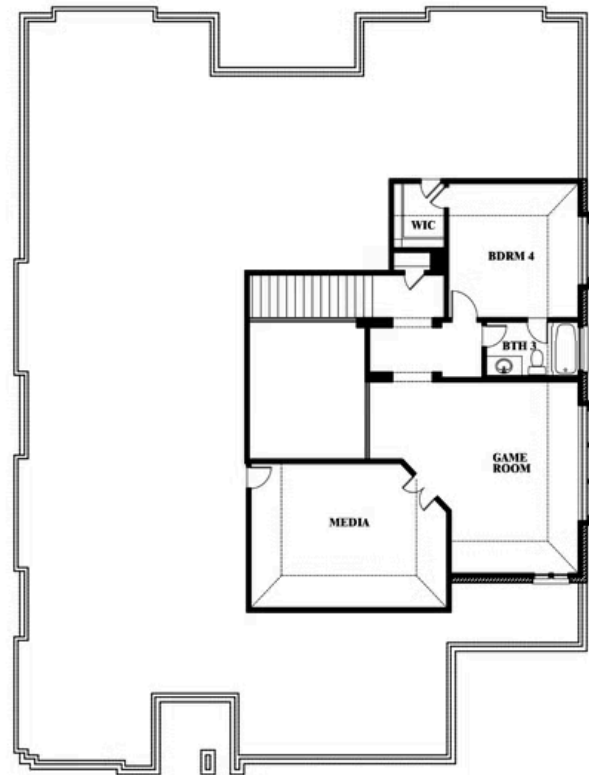
# Primrose FE V

## KREYMER EAST

1007 SHELDON DRIVE, WYLIE, TX 75098



## Primrose FE V



This brochure is for general informational purposes and is to be used as a guide only. Changes may be made during the development process and floorplans, dimensions, fixtures, fittings, finishes and specifications are subject to change without notice. Window placement, balcony configuration, wardrobe sizes and living areas may vary slightly within each plan type. **EQUAL HOUSING OPPORTUNITY**

